




# Newsletter— Food Bank News

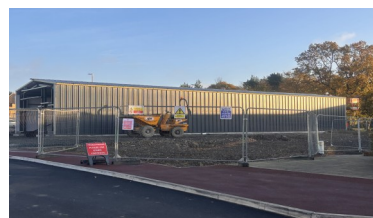
## Food Banks—New Build

The new Food Bank finally got the green  light for its build.

The start date was that of the 21st October, with a completion date of 15 weeks.

We will keep you updated on how the build is coming along in the new year.

Very exciting times ahead... roll on 2025.



## Hello & Goodbyes

We would like to say a BIG **“Hello”** to all our newest volunteers, A huge, heartfelt thank you to those who have left, your time and contribution to the food bank over the years has been invaluable.

### Welcome

Karina our new Admin Support who started at the Food Bank in October, for those who still to meet Karina please pop into the office to say Hi.

## Specials Thanks

- ♦ *To Judy for all your hard work decorating the Christmas Bags.*
- ♦ *Janice and Peter Crook for bringing Christmas toys/ gifts for the Food Parcels*

## Harvest Festival 2024

Another successful year of Harvest Festival donations 18 organised collections, the amount of donations we have received from the community to help those in financial hardship has been remarkable.



## Reverse Advent Calendar 2024

### 2024 Reverse Advent Calendar

Our elves at the Foodbank are in full swing organising all our food parcels ready for our clients over the festive holidays.

We have had a great response so far with food and toy donations.



## Full Circle Events—1000th Meal

We had a wonderful afternoon at Full Circle Food celebrating our 1000th Meal. The turnout was fantastic, volunteers from both Full Circle Foods and Wansbeck Valley Food attended.

Our partnership with Full Circle Food began towards the end of 2023 and the project took off in March 2024, to help those who are in hardship by providing a premade meal, we distribute to our clients on a Thursday and Friday. The premade meals have been a

great success and the feedback from our clients has been overwhelming and they are all so grateful for that little bit extra in their food parcels. We have so much more to give, and many more ideas planned for the future, so watch this space.....

Taster Workshops at Full Circle Food—if you would like to attend a free taster workshop on either 21st or 28th November please contact Sarah

on **07473249413** to book your place.

*When we give from the heart, the act of food donation becomes a gesture of love.*

## Mini Great North Run & Great North Runners

First we will start by saying a HUGE Thank you to all our runners who took one of our places and ran the Great North Run for Wansbeck Valley Food Bank, in total they raised £1265 And an extra special **Well Done** to Simon one of our volunteers who took part in the run.

Our Mini Champion Harry, who is only 6 years old, ran the mini GNRun with his dad and raised £300 for the Food Bank. Harry didn't do the run for fun, he wanted to do the run for a cause and chose the Food Bank.



## Thriving Together—Network Event

Thriving Together held their quarterly network event at Morpeth Rugby Club on the 4th of September, Wansbeck Valley Food Bank were one of many who attended, in all 67 organisations attended the event. I managed to make some really good contacts with a few of the organisations who attended, we have one contact who would like to work alongside the Food Bank to promote the new build and encourage more volunteers to join the Food Bank by doing a promotional video and helping with a press release through his contacts. Thriving Together aim to bring the voluntary, community and social enterprise sector together to make a positive impact on the lives of Northumberland residents.

NO ACT OF KINDNESS,  
INCLUDING DONATING FOOD, IS  
EVER TOO SMALL TO MAKE A  
DIFFERENCE

## Stobhill Link—Morpeth

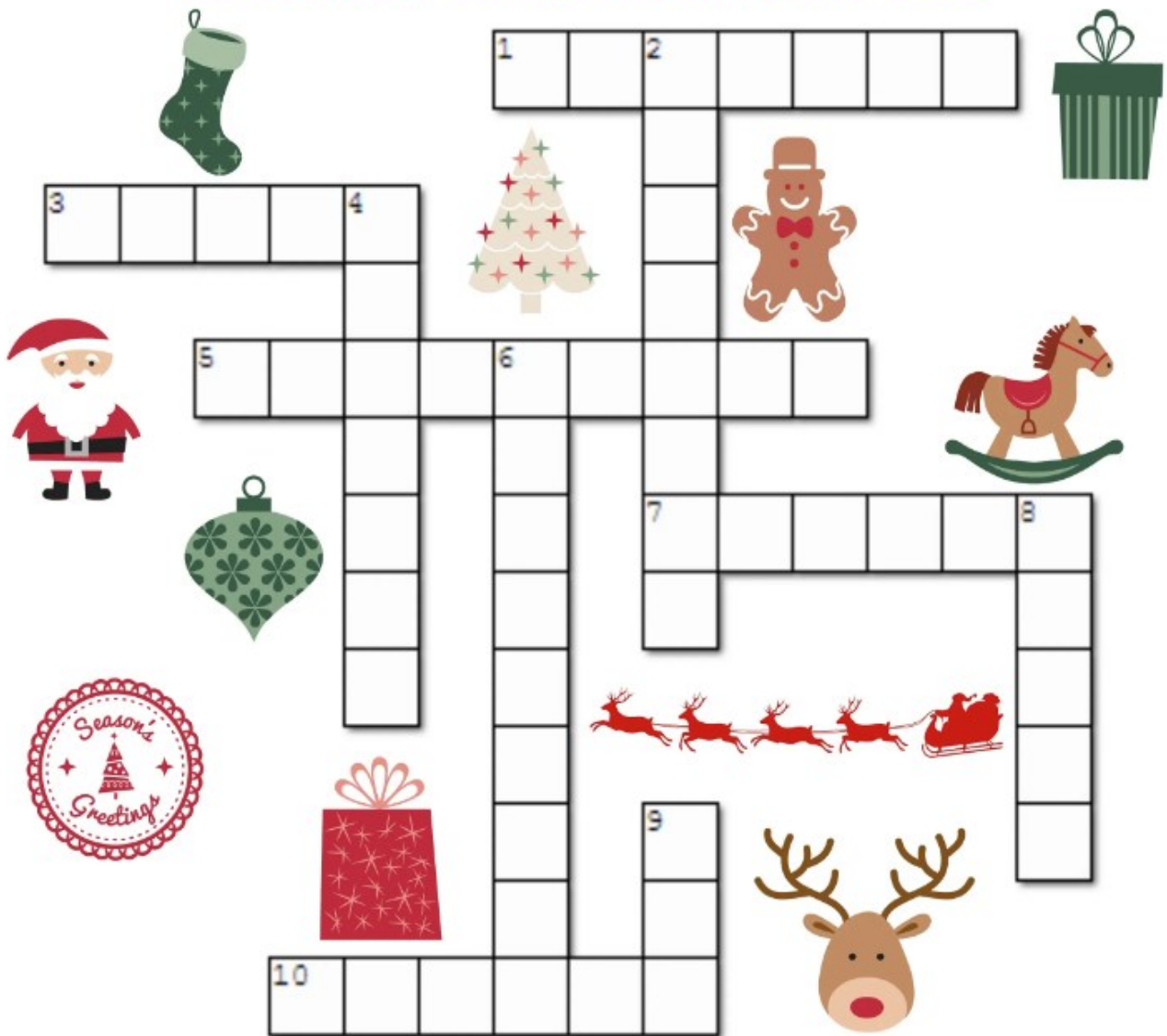
In August this year, Wansbeck Valley Food Bank met with Stobhill Link to see how we could help support their charity. At the Food Bank, we receive a lot of items that are short shelf life, we have arranged with Stobhill Link we could support their charity by dropping off those items as we did for Real Deal in Ashington, unfortunately we can't support Real Deal due to Kath closing their doors till further notice. We felt we needed to continue our support to a local charity with our short shelf life so food didn't go to waste that's where our new partnership came into effect with Stobhill Link. They have a Community Garden project, Uniform Bank, Food Pantry, Community Fridge, Community Repaint, and Office Services from printing, photocopying, emailing, and laminating for their clients.





# CHRISTMAS CROSSWORD PUZZLE

USE THE CLUES TO COMPLETE THE CROSSWORD PUZZLE.



## Across

1. One of Santa's Reindeer
3. Santa's Helpers
5. December 25th is \_\_\_\_\_.
7. Christmas Drink
10. The name of a popular snowman.



## Down

2. Christmas Month
4. He hates Christmas!
6. You hang them by the chimney.
8. On Christmas morning we unwrap our \_\_\_\_\_.
9. \_\_\_ to the world!





*I would like to Thank You all for your generous volunteering over the past year and your willingness to give your time is greatly appreciated.*



*Your support of the food bank allows us to continue to feed people in the Wansbeck area.*

*Thanks to your efforts, we will be able to continue to meet the needs of our clients.*

**Again** *Thank you for your willingness to help others in need as we continue to fight against food poverty.*

*Hope you all have a wonderful Christmas and a Happy New Year*

***Richard Anderson—Chair of WVFB***

### **Christmas Opening Times**

**Christmas Eve** - Warehouse 0845  
1300pm

Office 0800—1400pm

#### **27th December**

0900 –1400pm Office & Warehouse

#### **30th December**

0800 –1500 Office

0930 –1430 Warehouse

**Open on the 2nd January 2025**

On behalf of all the Trustees, for all your hard work and time this year, the girls in the office have a little something to give to you on our behalf. Please call in when you are next on shift.